



YORK

**1028 Opelika Road,
Auburn, AL 36830
Ph: (334) 826-9538
Fax: (334) 826-9539**

DH 036-060
DHG
DHE

DEG
DEE
DF 036-072

DCG
DCE
DM 036-072

Customer: _____ Project: _____

Ship To: _____

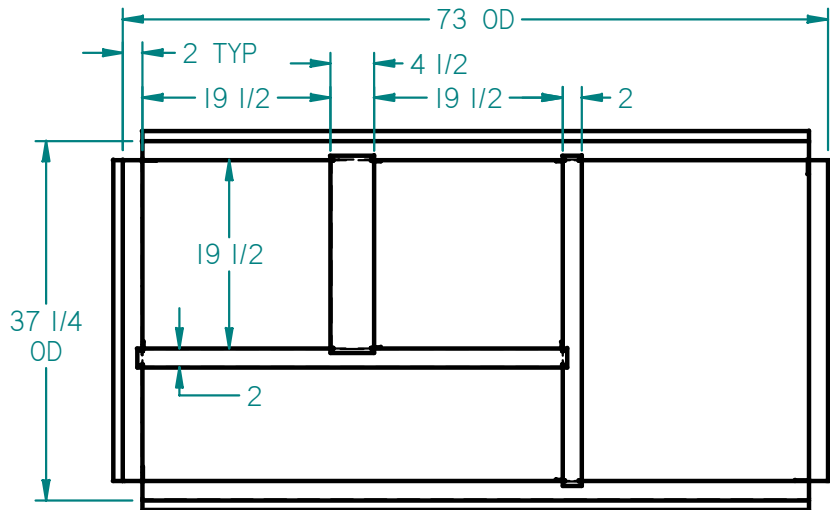
Standard Features:

- Welded or knock down 18ga G90 galvanized steel construction
- 14 inches high
- Factory installed PT 2x4 wood nailer
- Supplied 1-7/8x1/2" closed cell neoprene gasket

Options (please check):

- Heavier gauge metal
- 5052-H32 AL or 304 SS construction
- Custom height
- Horizontal duct connections*
- Turning vane*
- 1" or 2" isolation rails
- Seismic rating/stamped
- Filtration*
- Metal Building construction
- Insulated
- Other per customer specs

* Welded curb only



| QUANTITY | WELD / KD | HEIGHT | OPTIONS | SPECIAL NOTES |
|----------|-----------|--------|---------|---------------|
| | | | | |
| | | | | |
| | | | | |